

dwell

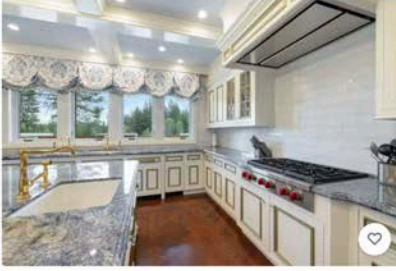
\$13.9M Luxury Mountain Retreat in McCall, Idaho, Offers Luxury and Breathtaking Views

By Contributor, February 1, 2024

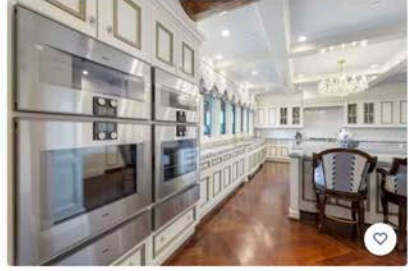




Interior



Interior



Interior



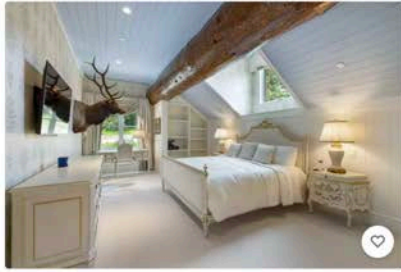
Interior



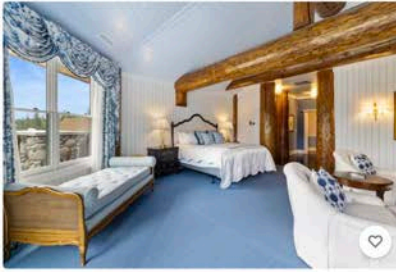
Interior



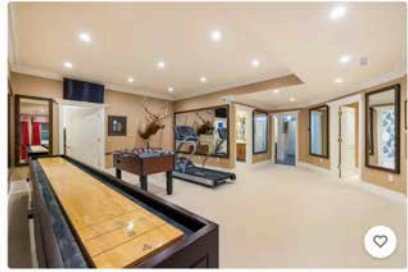
Interior



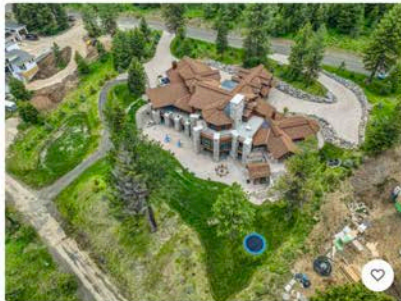
Interior



Interior



Interior



Exterior



Exterior

DETAILS

Square Feet

14, 625

Bedrooms

10

Full Baths

13

This remarkable 14,625 square foot, 10-bedroom, 13-bathroom property at 4305 Song Sparrow Drive at Whitetail Club is situated on over two acres and is professionally decorated throughout with custom high-end furnishings, interiors, marble and granite countertops, and finishes.

Additional features include two lavish primary suites, a chef's dream kitchen with state-of-the-art appliances and a spacious island connecting to a formal dining room, a covered outdoor patio with a fireplace and lounge seating. With spacious bedrooms, including a charming bunk room that comfortably sleeps seven and features two separate side-by-side showers, there's room for everyone.

For entertaining, the lower level offers a recreation room and bar complete with a refrigerator, ice maker, and butler's pantry. It's an ideal space for family gatherings, complemented by an adjacent gym and a sunken hot tub just outside. Adding to the convenience, the entire home is easily accessible via a 3-floor elevator.

Owners also receive access to the first-class year-round amenities at Whitetail Club, the premier private community in the Pacific Northwest, including Whitetail Club's Golf Course, the 17,000 square-foot ClubHouse, indoor tennis & fitness, lakeside activities at The Marina, dozens of trails, The Cove Spa, and private events.