

# EAGLE BASIN

## MAIN FLOOR PLAN

MAIN FLOOR: 2,287 SQ. FT.

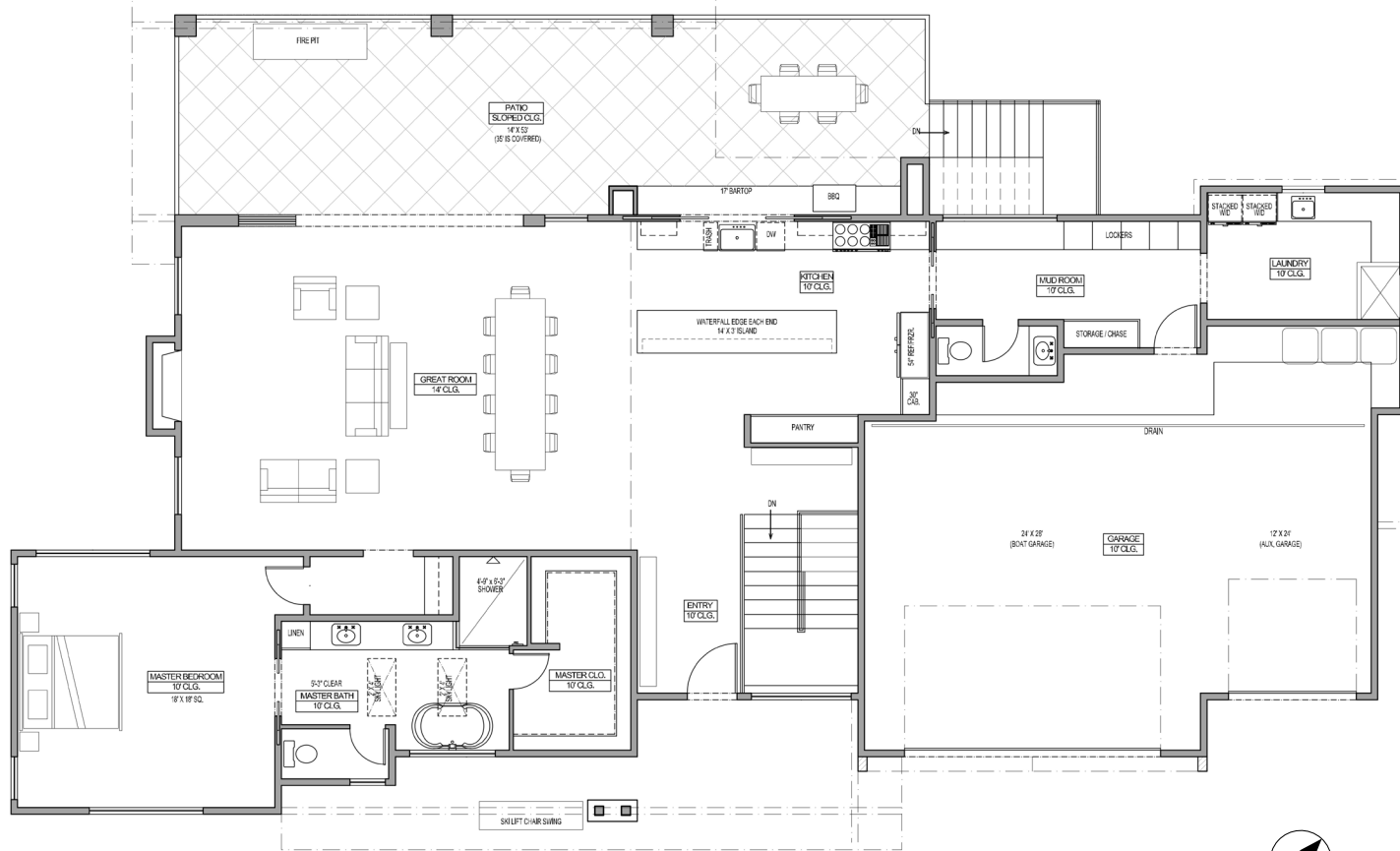
LOWER FLOOR: 1,780 SQ. FT.

TOTAL: 4,067 SQ. FT, HABITABLE

BEDROOMS: 4

BATHROOMS: 4.5

GARAGE: 1,130 SQ. FT.



# EAGLE BASIN

## LOWER FLOOR PLAN

MAIN FLOOR: 2,287 SQ. FT.

LOWER FLOOR: 1,780 SQ. FT.

TOTAL: 4,067 SQ. FT, HABITABLE

BEDROOMS: 4

BATHROOMS: 4.5

GARAGE: 1,130 SQ. F

